

**L.C.C. Site Survey Photographs
Taken on 22nd May 2018**

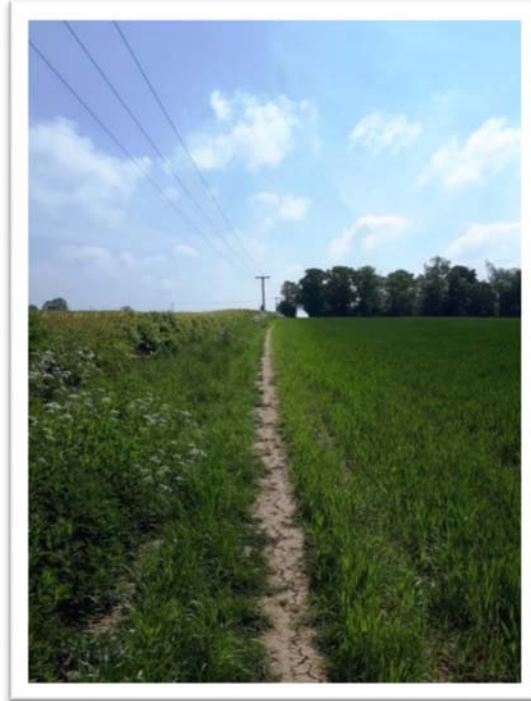


Photo 1: A view of the pathway taken from where it leaves Footpath C13 (Point A) showing a well-trodden track following the headland towards the northern end of Glen Oaks Spinney on the horizon.



Photo 2: A view of the alleged footpath looking back along the headland towards Footpath C13 and Glenfield Village.



Photo 3: Photograph of junction of alleged Footpath C109 (foreground) and alleged footpath C109a (heading off into the woods. Taken from point 'B' on the map.

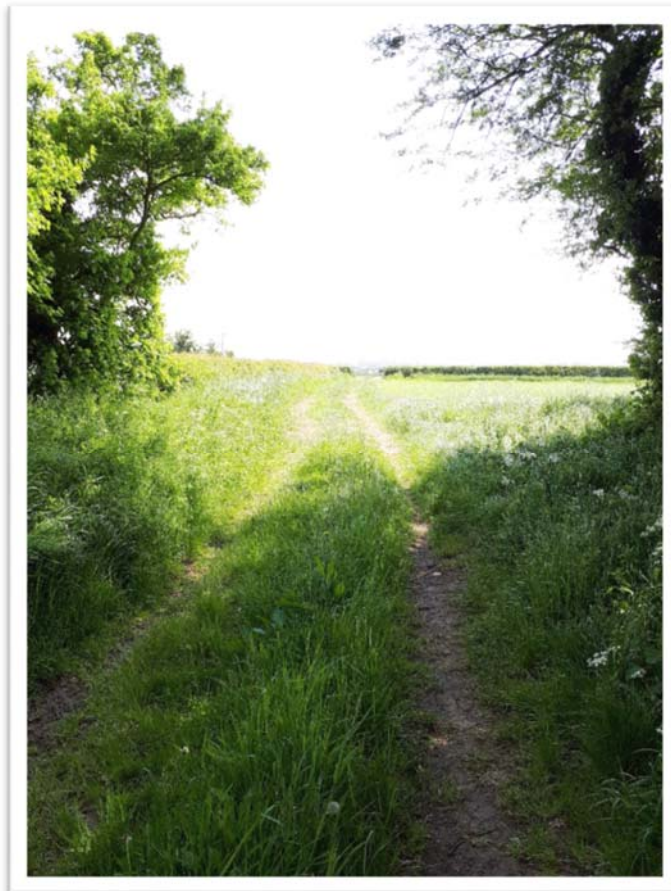


Photo 4: Continuation of alleged Footpath C109 leading out of wooded area along field track towards access gate.



Photo 5: Looking along alleged Footpath C019 following the farm track towards the field gate out onto Oaks Road (north) at point 'C'.



Photo 6: Looking back along the farm track towards the northern end of Glen Oaks Spinney.



Photo 7: Looking back towards the field gate and entrance to alleged Footpath C109 from the opposite side of Oaks Road (north). At point 'C' on the plan.

Alleged Footpath C119A



Photo: 8: Continuation of alleged Footpath C109a southwards through middle of Glen Oaks Spinney.



Photo 9: Further continuation of path through woodland.



Photo 10: Picture of alleged Footpath C109a as it emerges out onto Oaks Road (south) at point 'D' on the plan.



Photo 11: Emergence of alleged Footpath C109a onto Oaks Road (south) taken from opposite side of road at point 'D'.



Photo 12: Oaks Road (south) leading back to Great Glen Village.